

Summary Unit 2 - 3º E. Primaria

Points, Lines, and Shapes

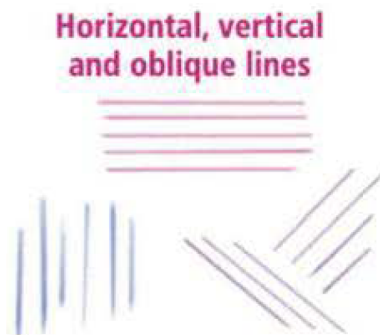
- Points are usually very small, but they can be large in works of art.
- There are many types of lines:
 - open and closed:



- straight and curved:



- vertical, horizontal, and oblique.



- We use closed lines to create shapes.

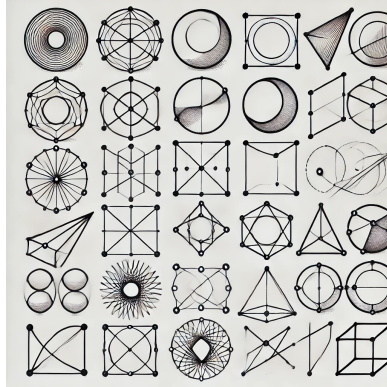


Figura 1: ilustración que muestra el uso de líneas cerradas para crear formas. La imagen incluye varias líneas cerradas que forman diferentes figuras como círculos, cuadrados, triángulos y otros polígonos.

Outer and Inner Contour

- The outer contour surrounds a figure. It is composed of horizontal, vertical, and oblique lines.

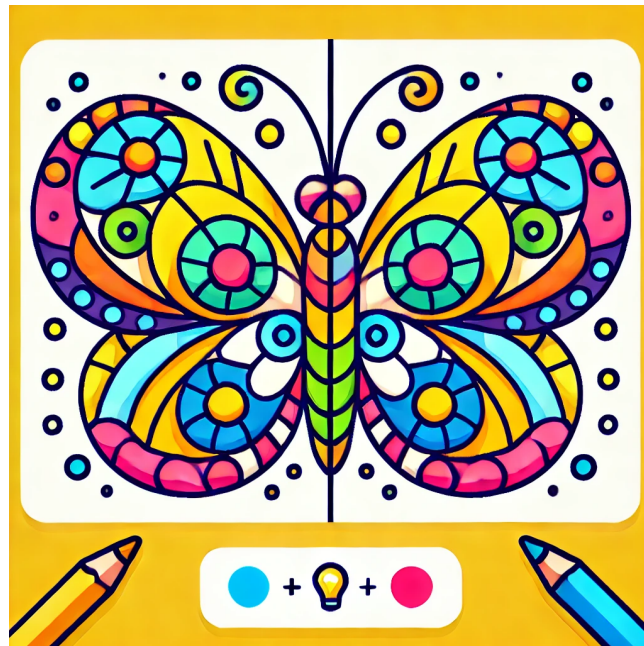


The inner contour includes the elements within the outer contour.



Symmetry

An image is symmetrical when its left and right sides are identical.



Installation Art

An installation art is a type of contemporary art in which the room or space is part of the artwork.



Instalation art