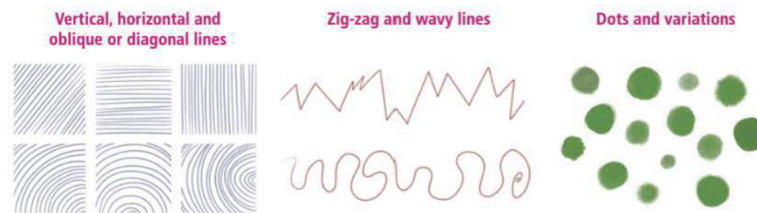


Summary Unit 2 – 4º Primaria

Lines and dots as elements of landscapes

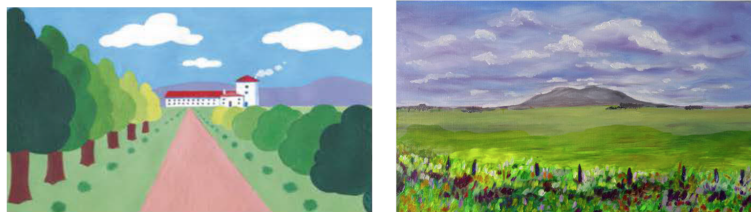
Lines and dots are elements of landscapes. There are different types:

- Vertical, horizontal and oblique or diagonal lines
- Zig-zag and wavy lines
- Dots and variations



Perspective and lines to create depth

The perspective gives the impression of depth. It shows how close or far away an element is. The direction of the lines we use can change this impression; in art, it involves drawing closer elements larger and farther elements smaller. Depth can also be created by drawing closer objects in darker colors. When observing images of vast landscapes (mountains, cities with skyscrapers...), you will notice that the farther they are, the blurrier and paler they appear.



Layers of depth

We can create layers of depth and the impression that elements are near or far by using light or dark shades of colour.



Types of landscape

- Natural landscapes are either land or aquatic.



- Urban landscapes show buildings in towns and cities.



Complementary colours and cool and warm colour ranges

Warm colors would be those located within the red, orange, and yellow spectrum, while cool colors would be the hues of the violet, blue, and green spectrum. Violet tones and greens would fall in the middle, bridging the divide between warm and cool tendencies.

